



Yacht Broker Since 1959

CSO YACHTS

SALES - MANAGEMENT - CHARTER

GLOBE TROTTER



19.0m (62'4") PIRLANT YAT CEKEK LTD

LOA: 19.0m (62'4")

Beam: 5.6m (18'4")

Draft: Max 2.0m (6'7")

Speed:

Location: Cruising (Turkey - South)

Year: Mfg-2007 Model-2007

Mfg: PIRLANT YAT CEKEK LTD

Type: Motor Yacht

Displacement

Price: 1,200,000 EUR

Claude Schmitt Organisation
45 la Croisette
res du Grand Hotel
Cannes, 06400
France

Phone: (33) 493382270
Fax: (33) 493992585
Email: info@csoyachts.com
URL: <http://www.csoyachts.com>

GLOBE TROTTER

Page 1

Additional Specifications For GLOBE TROTTER:

LOA:	19.0m (62'4")	Year:	Mfg-2007 Model-2007
Mfg. Length:		Mfg:	PIRLANT YAT CEKEK LTD
Beam:	5.6m (18'4")	Model:	
Draft:	Max 2.0m (6'7")	Type:	Motor Yacht
Hull Mtrl:	Steel		Displacement
Hull Cnfg.:	Full Displacement	Top:	
Hull Designer:		Cockpit:	Yes
Deck Mtrl:	Teak	Speed:	
Disp:		Engines:	2xCummins
Range:			255 HP , 150hrs
Fuel Cap:	10000 l (2642 g)	Engines Year:	2007
Water Cap:	2000 l (528 g)	Staterooms:	3
Holding Tank:		Sleeps:	6
Flag:	GIBRALTAR	Heads:	3
Classifications:	R.I.NA	Crew	1
Class Type:		Quarters:	
MCA:		Crew Berths:	2
ISM:		Crew Heads:	1
Location:	Cruising (Turkey - South)	Price:	1,200,000 EUR

Accommodations

- Master cabin with ensuite bathroom,
- Two twin cabins with toilet and shower en suite
- Interior Finish: Satin Burmese teak wood
- Flooring; High gloss Burmese teak wood
- Deckheads Finish; Material/Wood Burmese teak in satin
- Bulkheads Finish: Wood – Burmese Teak in satin ,
- Lighting; 24v and 220v and table lamps
- Windows / Portholes
- All the wood is Burmese teak of higher quality in satin finish

Cockpit

- Raymarine chartplotter – E120
- Raymarine DSC VHF – 54E
- Raymarine radar / depth sounder – C120
- Raymarine autopilot – ST 8002
- Raymarine depth sounder – ST60+
- Raymarine wind speed/direction indicator– ST60+

Claude Schmitt Organisation
45 la Croisette
res du Grand Hotel
Cannes, 06400
France

Phone: (33) 493382270
Fax: (33) 493992585
Email: info@csoyachts.com
URL: <http://www.csoyachts.com>

- Analog liquid level indicators
- Rodriguez hydraulic/electric bow thruster
- Search light
- AC unit control panel
- Electrical control panel
- Engines control unit
- Pilot seat
- Leather sofa
- Window wipers

Deck Equipment

- Rigid tender, 20hp Yamaha outboard
- 2 x brass bits aft deck
- 2 x Retractable capstans on the aft deck
- Pilot station on the aft deck
- Teak dining table with six chairs on the aft deck
- Teak chest for the lines on the aft deck
- Telescopic gangway with control panel – aft deck
- Hydraulic folding swim platform with control panel – aft deck
- 2 x 130kg anchors
- 4 x 25m mooring lines
- 2 x 140m anchor chain
- Trawler mast and boom for the rigid dinghy is made of aluminum with special paint that way it looks as if it is made of wood.
- Lifting mechanism is made of easy to operate manual 2 speeds of Lewmar 2 winches.

Electrical System

- 240V / 380V - 3phase, 24V,
- Voltage regulator
- Inverter 24V / 220V – 300W
- 2 x Vitron 80A batteries chargers
- 12 x Gell 24V Service batteries 800 AH
- 3 x 12 V emergency batteries
- 2 x Main engines starting batteries
- 1 x Generator starting batteries
- 2 x Extractor fans Gianceschi and Ramaciotti - 0,30KW 2700 RPM's
- 1 x 220V sea water pump/fire pump – G & R

Engine /Mechanical Equipment

- Cummins x 2 Serial number Port : 21691739, Strd : 21691341
- Cylinders 6 each engine, diameter 114mm, stroke 135 mm
- Horsepower 2 x 255hp / 190,16kw
- Cruise Speed 9 Knots @ 1550rpm

Claude Schmitt Organisation
45 la Croisette
res du Grand Hotel
Cannes, 06400
France

Phone: (33) 493382270
Fax: (33) 493992585
Email: info@csoyachts.com
URL: <http://www.csoyachts.com>

- Maximum Speed 11 Knots @ 1850 rpm
- Consumption 120 litres/hour
- Hours Port -125h, Stbd - 124h
- Watermaker 1 x Idromar 250 l/h
- A/C Marine air sistem reverse cycle
- Bow thruster Hydraulic and electric
- Extractor fans Gianceschi and Ramaciotti O,30KW 2700RPM
- Isotemp 1 x 120L stainless still boiler
- Stabilisers

Galley

- 1 x 200L Refrigerator/Freezer Wheerpool
- 1 x Microwave/Oven Wheerpool
- 1 x Dishwasher Wheerpool
- 2 x Electric hoobs Wheerpool
- 2 x Gas hobs Wheerpool
- 1 x Extractor fan Whirpool
- 2 x Fully marbled surfaces
- 1 x Stainless still sink with hot and cold water tab

Guest Stateroom

- Two single beds
- Shower/toilet en suit with marble tops
- Brass port holes
- AC unit control panel
- Wire for audio video installation
- Cupboard and storage
- Both cabins decorated in Burmese teak of higher quality in satin finish throughout
- 4. Deck Equipment
- Rigid tender,

Master Stateroom

- 1 x queen size bed
- 1 x kennwood cd player,
- wires for the audio video installation
- Shower/toilet en suit.
- Marble tops
- Bras port holes
- Sky Light/ emergency escape hatch on the ceiling
- Cupboards, ample storage
- AC control panel
- Decorated in Burmese teak of higher quality in satin finish throughout

Claude Schmitt Organisation
45 la Croisette
res du Grand Hotel
Cannes, 06400
France

Phone: (33) 493382270
Fax: (33) 493992585
Email: info@csoyachts.com
URL: <http://www.csoyachts.com>

Safety And Fire Protection

- 1 x 12 Persons Liferafts
- SOLAS lifejackets
- Survival suits
- GMDSS VHF radios
- Pyrotechnics
- Line Throwers
- MOB Recovery rings
- Rigid tender with 20 hp Yamaha outboard

Salon

- LG plasam TV
- Kenwood CD player
- 8 Pearson wooden dining table on the port side aft
- Off-white leather sofa on the port side aft
- 5 wood/leather chairs
- Wooden floors ((high quality glossy Burmese teak)
- Leather sofa color off white
- Two bar stools on the strd side forward
- Two Burmese teak satin finish wooden bars, dividing the galley from the saloon
- Two leather arm hairs
- Wooden cafe table
- Decorated in Burmese high quality teak in satin finish

Deck Equipment



Deck Equipment



Claude Schmitt Organisation
45 la Croisette
res du Grand Hotel
Cannes, 06400
France

Phone: (33) 493382270
Fax: (33) 493992585
Email: info@csoyachts.com
URL: <http://www.csoyachts.com>

GLOBE TROTTER

Page 6

Salon



Salon



Claude Schmitt Organisation
45 la Croisette
res du Grand Hotel
Cannes, 06400
France

Phone: (33) 493382270
Fax: (33) 493992585
Email: info@csoyachts.com
URL: <http://www.csoyachts.com>

Master Stateroom



Guest Stateroom



Claude Schmitt Organisation
45 la Croisette
res du Grand Hotel
Cannes, 06400
France

Phone: (33) 493382270
Fax: (33) 493992585
Email: info@csoyachts.com
URL: <http://www.csoyachts.com>

GLOBE TROTTER

Page 8

Cockpit



Other



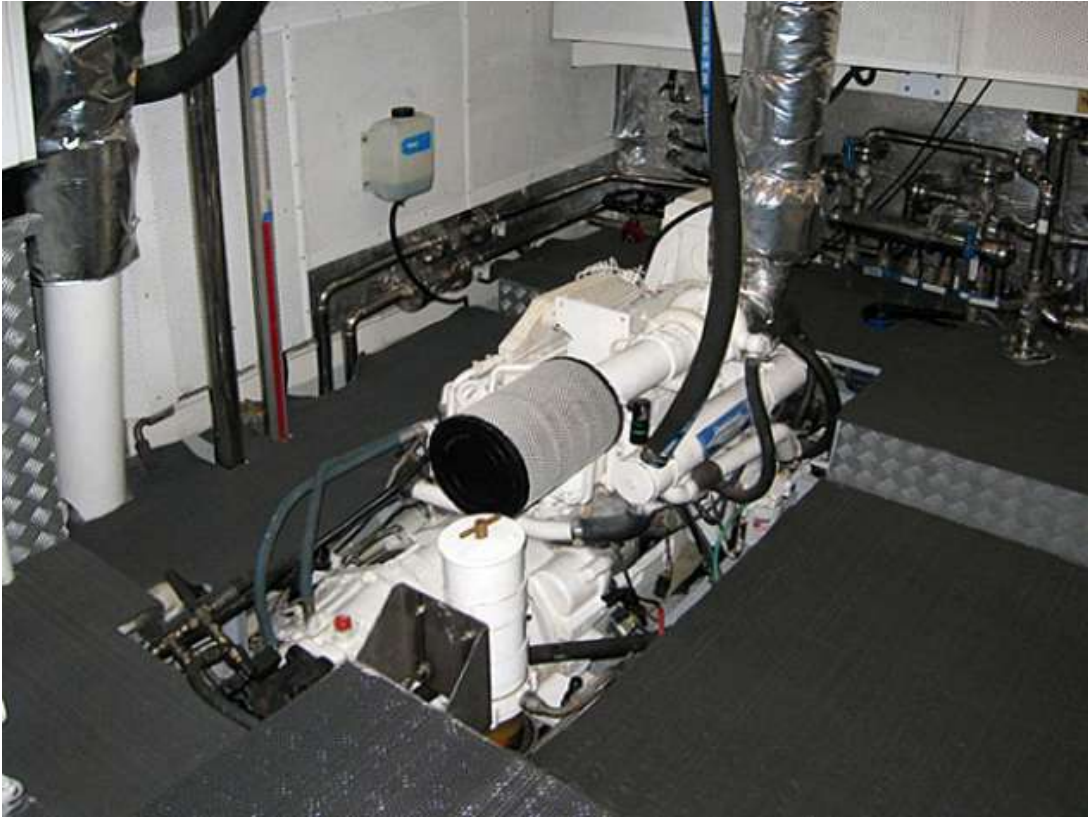
Claude Schmitt Organisation
45 la Croisette
res du Grand Hotel
Cannes, 06400
France

Phone: (33) 493382270
Fax: (33) 493992585
Email: info@csoyachts.com
URL: <http://www.csoyachts.com>

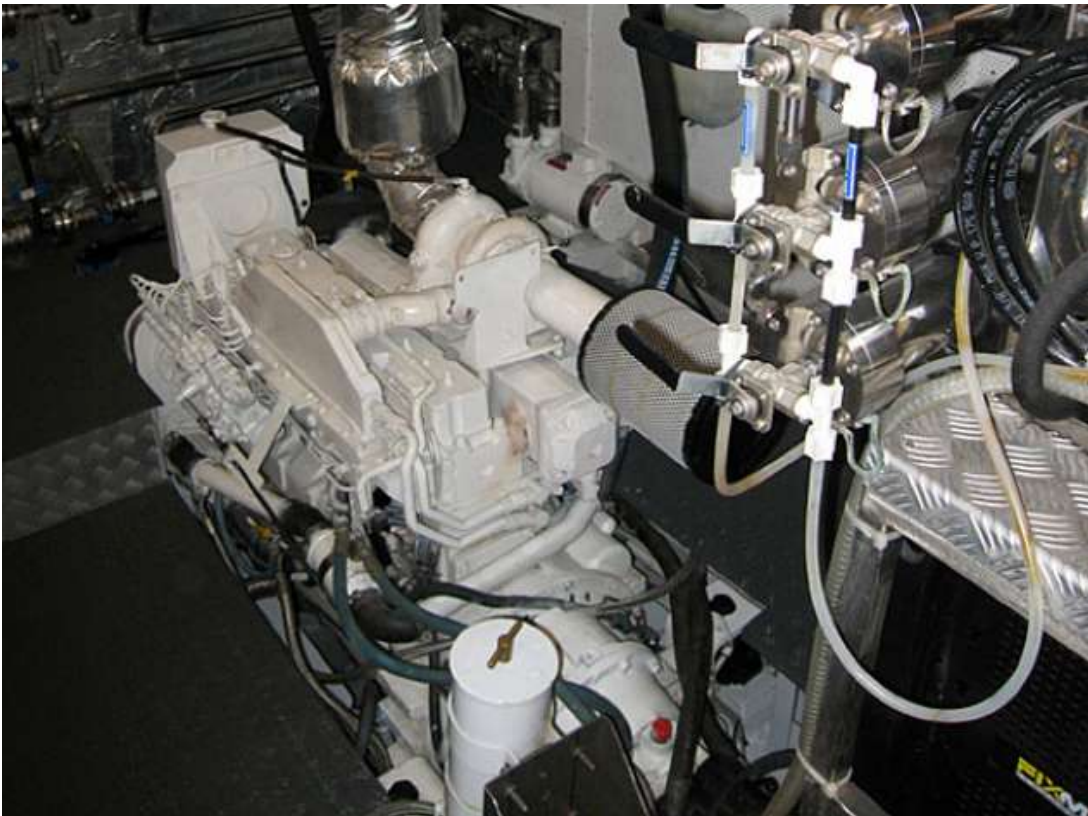
GLOBE TROTTER

Page 9

Engine /Mechanical Equipment



Engine /Mechanical Equipment



Claude Schmitt Organisation
45 la Croisette
res du Grand Hotel
Cannes, 06400
France

Phone: (33) 493382270
Fax: (33) 493992585
Email: info@csoyachts.com
URL: <http://www.csoyachts.com>

Layout

